

High Pressure for Service Providers?



■ Economic rationale:

- ▶ Sustain EBITDA margin
- ▶ Compensate for decline of traditional revenues with OPEX improvement and revenue stabilization

■ Commercial rationale:

- ▶ Fight competition with service bundles
- ▶ Manage churn, improve customer retention

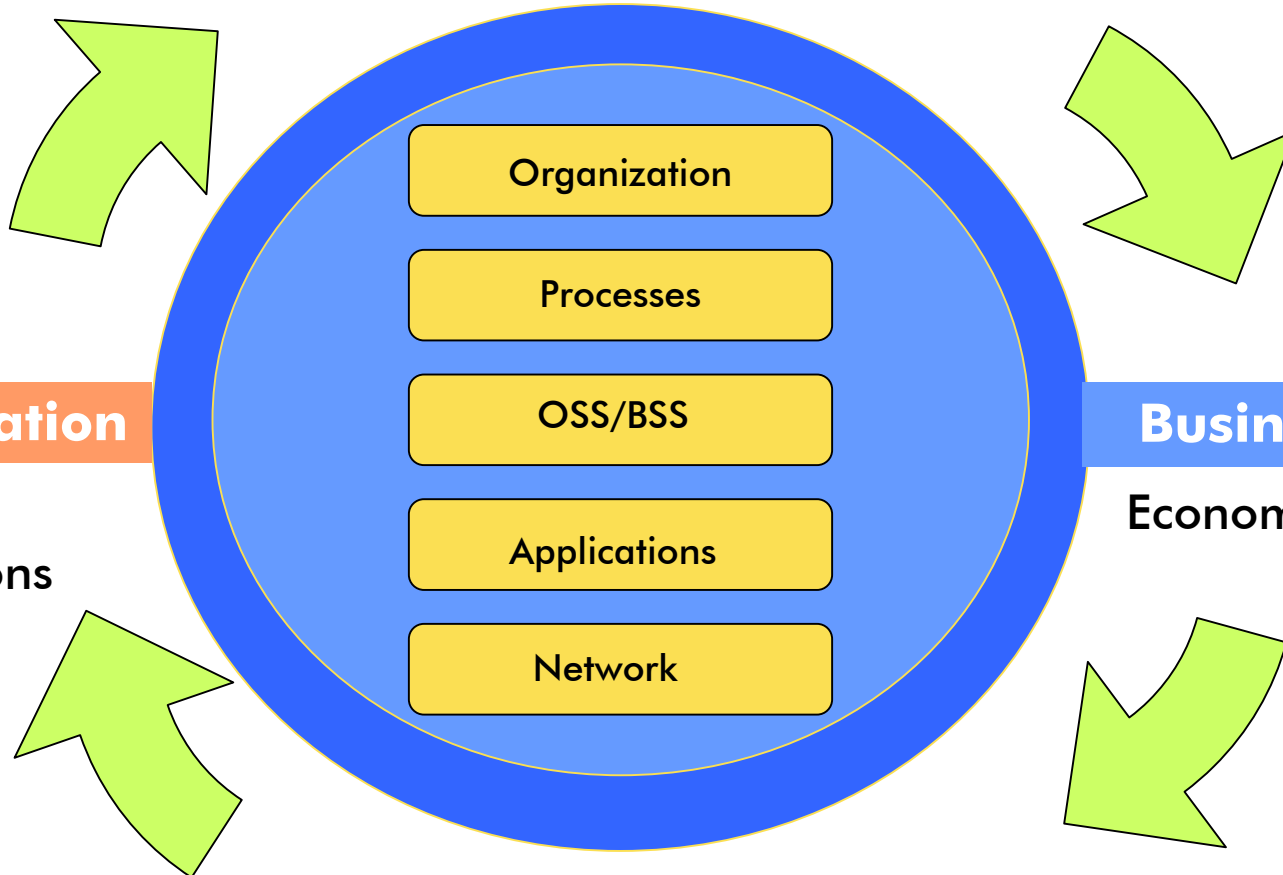
■ Business rationale:

- ▶ Revise business model with new partnerships
- ▶ Create sustainable value through service innovation/differentiation

Transformation Path

Customer Focus

Customer experience



Service offering

Service vision & attributes

Transformation

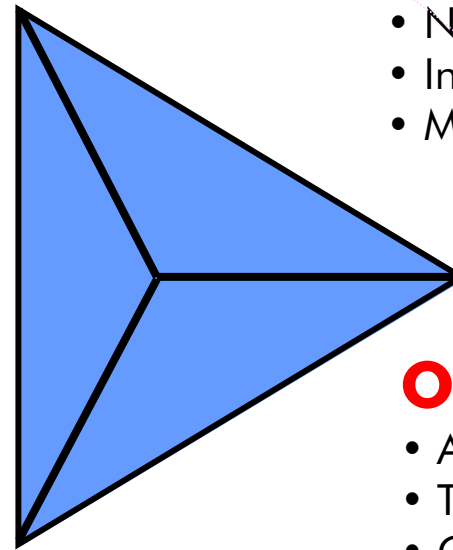
Network
& operations

Business model

Economic modelling

End-User Service Innovation

- Assessment & Analysis
- Target Service Attributes
- Services-Implementation Roadmap
- Alternative Business Models for Service Delivery



Network Simplification

- Assessment & Analysis
- Target Architecture
- Network Solution Roadmap
- Integration & Implementation
- Migration

Operational Efficiency

- Assessment & Analysis
- Target Process & Organization
- OSS/BSS Solution Roadmap
- Integration & Implementation
- Alternative Partnership Models for Network Operations

Innovative Multimedia Applications

Consumer Applications

Enterprise Applications

MUSIC

Personal Ring-Back Tone



Music, Video Content Delivery



VIDEO

Voice/Video Calling



Triple Play/IPTV



Video Mail Box Security/Blog



Video MMS Mobile TV



Multi-Access Mobility



One Phone

Mobile Office Voice



Voice and Video Conferencing



Multimedia Conferencing



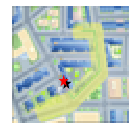
Payment and Common Capabilities

Real-Time Payment
Advanced Flexible Rating

Mobile Kiosk



Content Value Charging



Location

Presence

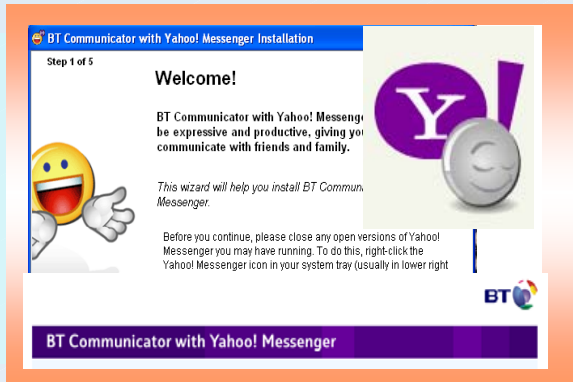


Announcement Machine



User Profile

The Under-Served End-User Demand for Personalized Services



Broadband VoIP



One-Phone



Phone to TV

TIME

May

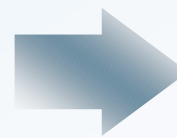
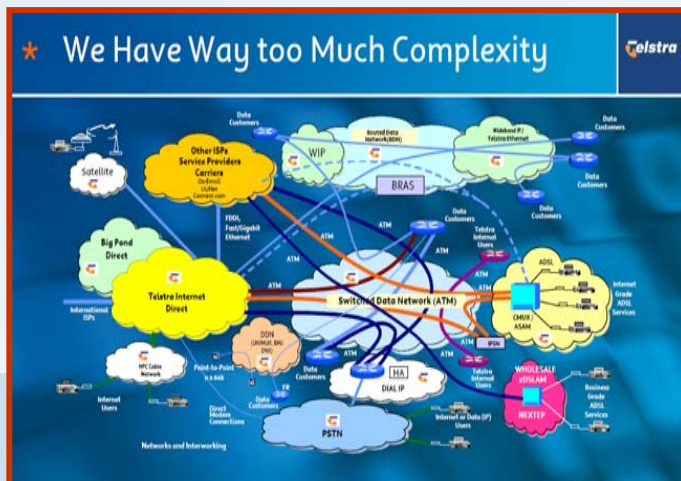
2006

Of all the hyped technology predictions of recent years, the most believable are usually the ones that allow people to do more easily or better things they already want to do — like shopping, talking, getting information.

The world is moving to IP... ...as services are becoming user-centric

Now benefiting from an all-IP world

- Simplified architecture, economical to operate
- Flexible and scalable platform
- For both enterprise and consumers
- Fast introduction of innovative, user-centric services
- Telstra's example...





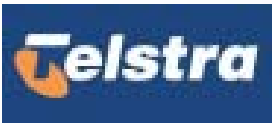
Alcatel: Leading Transformation Projects Across the World

Triple play 40+ projects



▶ Up to 100 M subscribers by 2010

Network Transformation 40+ projects



▶ Services & infrastructures convergence to IP

Roll out a state-of-the-art fiber optic network

**Deliver IPTV, video-on-demand (VOD), high-speed Internet,...
to 18 million US households**



End-to-end integration

Network provider: access, IP routing

Video service integrator: Head end, middleware, content management, conditional access and DRM, home networking and set-top boxes

Integration lab in Plano, Texas



**Enterprise users reachable on dual mode handset
using one single phone number**

Targeting large business customers in UK and Europe



Prime contractor and systems integrator:

- Design, integration (including 3rd party) and testing of end-to-end solution**
- Supply platform elements from Managed Communications Services portfolio**
- Ensure solution integrates seamlessly into BT's enterprise customer sites**

Evolve existing infrastructure to NGN while reducing complexity

Optimize service delivery (time, provisioning, etc)



End-to-end IP transformation including:

Business case development

Network architecture and transition steps

Full solution delivery

Full voice migration to IP

Network operations/outourcing

The World's Premier Networking Vendor

#1 Broadband Access
xDSL, MSAP/DLC

#2 Carrier Ethernet S/R
Consumer, Enterprise

#1 Optics
Terrestrial, Submarine

ACCESS
LEADERSHIP

IP / ETHERNET
ROUTING
LEADERSHIP

OPTICAL
NETWORKING
LEADERSHIP



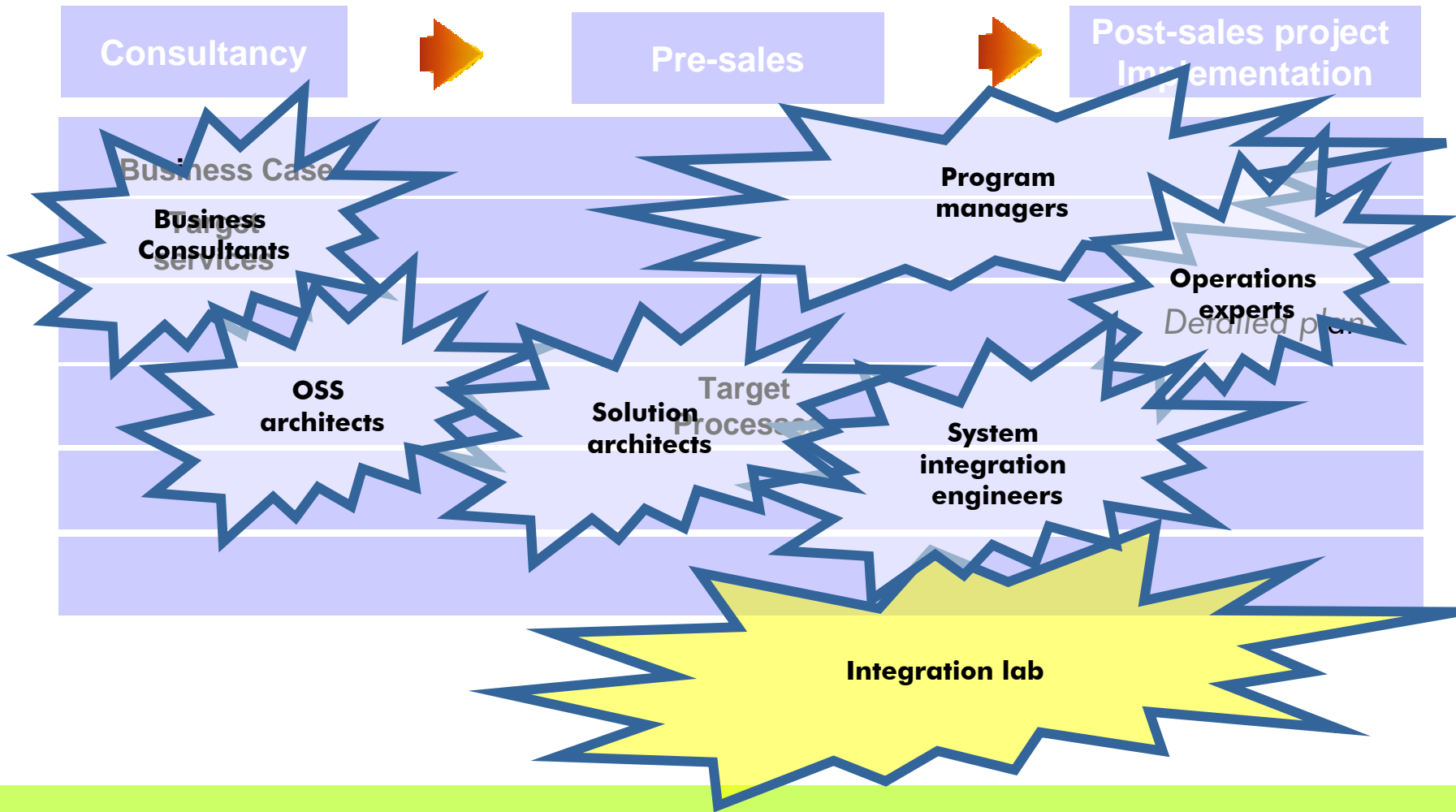
- Speed-up transformation
 - Share best practices
- Control risk factors
 - Manage interdependencies
- Ensure performance & stability
 - In-lab integration and validation

Alcatel IP Transformation Centers

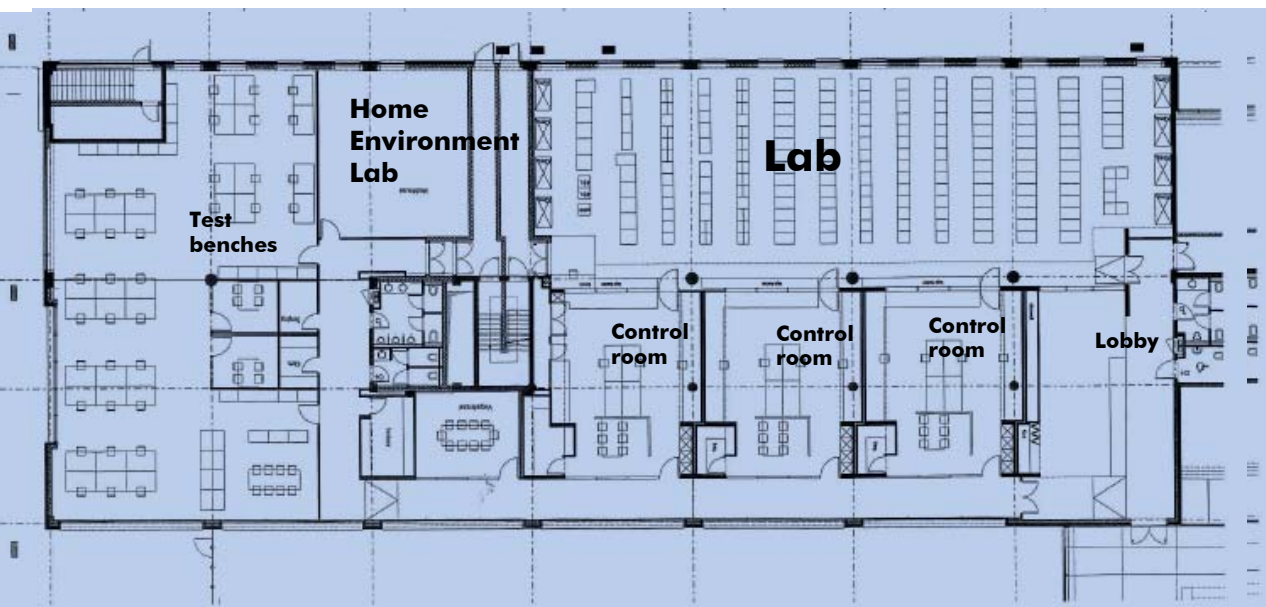
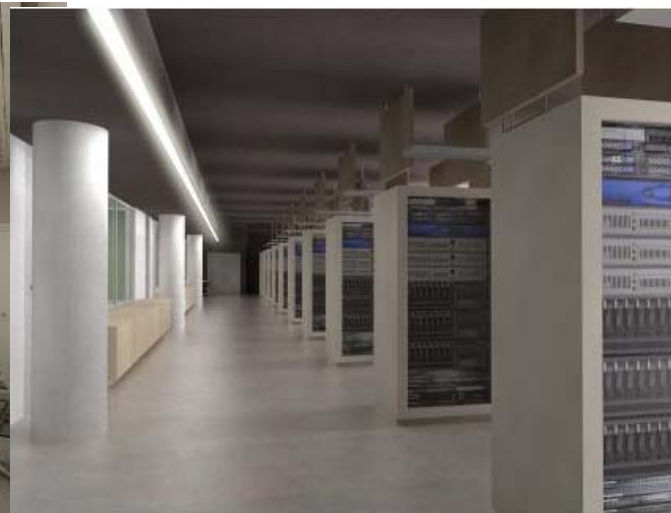


- ▶ Assist our customers in defining their business transformation journey
 - Design, integrate and test end-to-end customer specific solutions with operational support systems
 - Build Pre-integrated Alcatel reference solutions
 - Leverage IP transformation experience gained across the world in conjunction with Plano and Sydney

Central pool of experts and the integration lab capability is unique



Antwerp IPTC Integration Lab facility



- 1500 M2 E2E integration and test facility dedicated to our customers
- Significant flexibility
- Full Alcatel portfolio and that of our partners



Welcome to the Antwerp IPTC!

First center of such scale in Europe

100+ experts 50+ technologies

End-to-end integration & test facility covering CPE,
networking, core, application platforms and OSS

B R O A D E N Y O U R L I F E

www.alcatel.com