



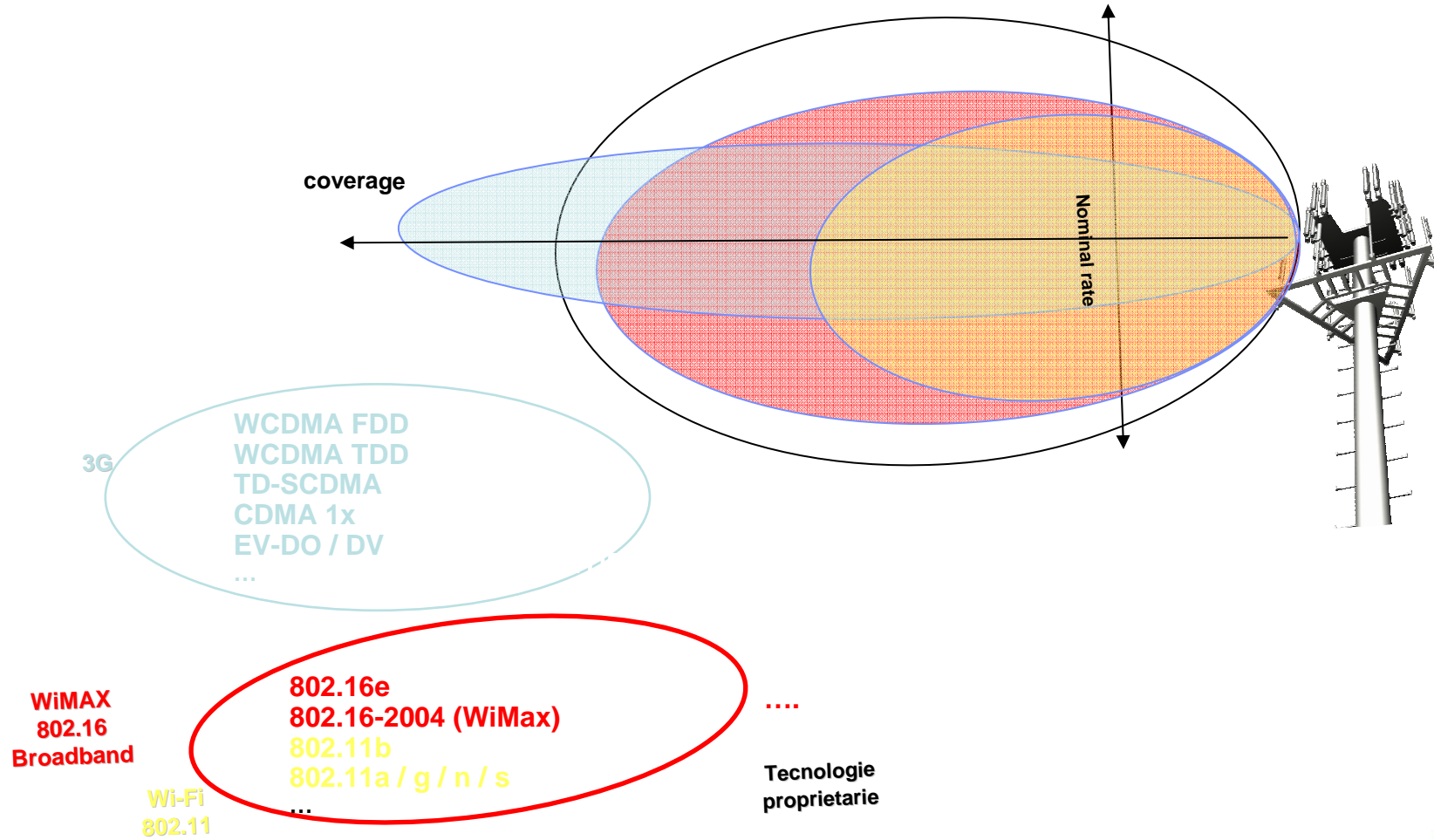
# WiTech, Spin Off University of Pisa Company Profile



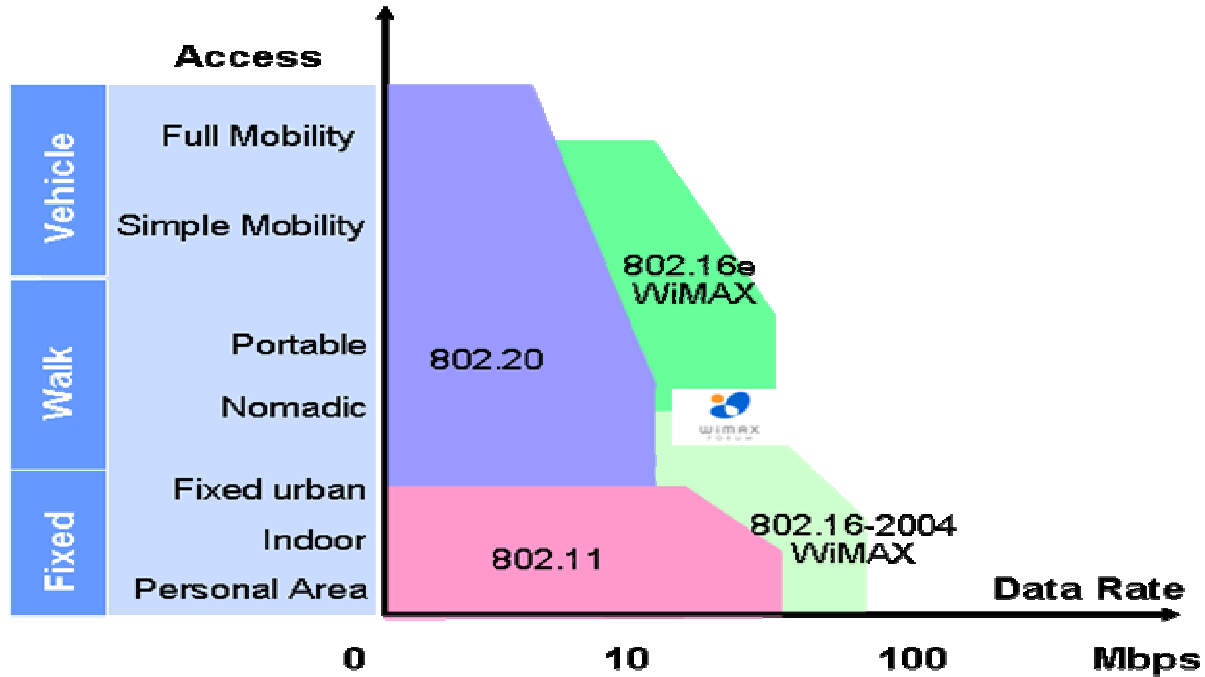
**Broadband Wireless  
on the move**

**Marketing Area**

# WiTech: Broadband Wireless Vision



## WiTech: IEEE Broadband Wireless Standard



Source\_\_WiMAX and 802.11:  
Performance Comparison and Business  
Plan Analysis for Services Providers

© 2006 WiTech. All rights reserved.



## WiTech : BWA on the move

### General info

Srl, Ottobre 2003, Spin off dell'Università di Pisa, sede Polo Tecnologico di Navacchio (15.000 m<sup>2</sup>, 56 Aziende hi-tech, 450 addetti), 14 unità (80% laureati)

### Skill Technologies

**BWA:** 802.11x, 802.16-rev2004/e, 802.20, Proprietary Technologies: Flarion, Navini, Arraycom, Radio Mobile (GERAN GPRS/EDGE, UTRAN WCDMA TDD-FDD/ HSDPA)

**Focus :** AAA Platform (Radius), VoIP (Sip), Security (802.1x/EAP), WCC (UMA Technology), Technical and Economic Analysis (TEABWA)

### R&D

**WR0P:** AAA Platform e CRM, firmware for gateway, software client

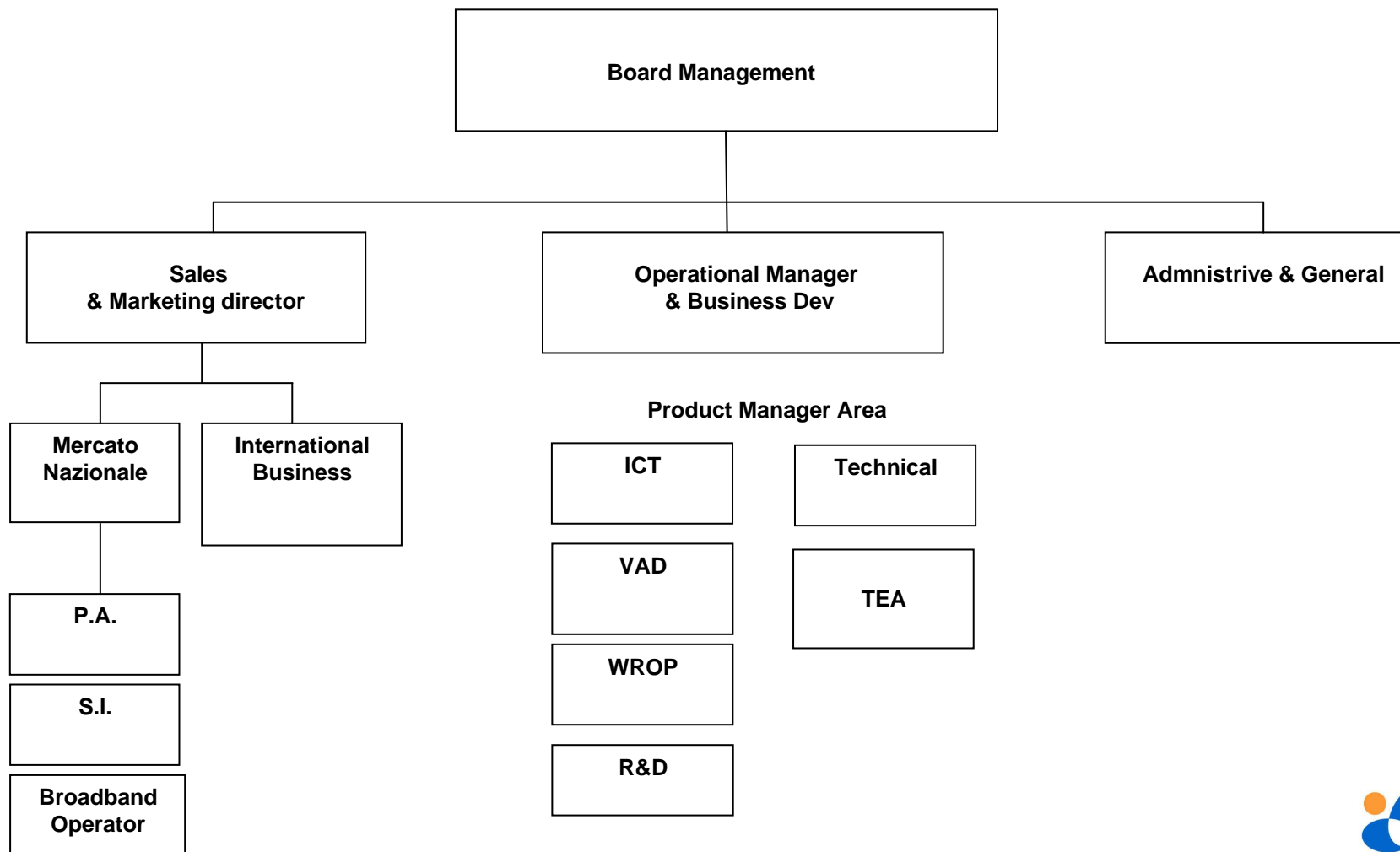
**TEABWA :** Technical and Economic Models for BWA

**UMA Technology**

**MIMO e OFDM**

**MoIP AP:** gateway wireless for multimedia services (TLCNetgroup Unipi)

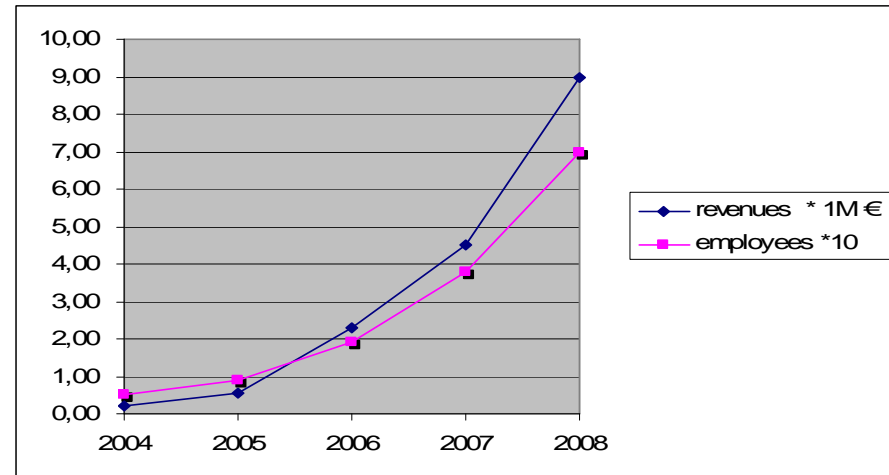
# WiTech: Structure



## WiTech: Broadband & Wireless

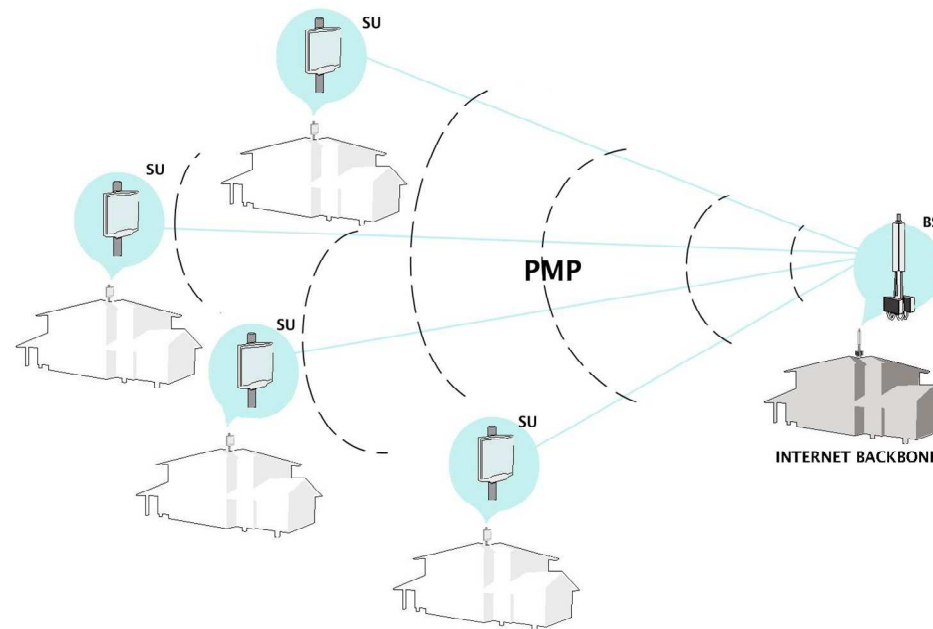
### Activities:

- Excutive Project
- RF Planning
- TLC Platform
- Technical & Economic Analysis
- R&D
- Technical Support
- Learning



# Wireless Networks Infrastructure

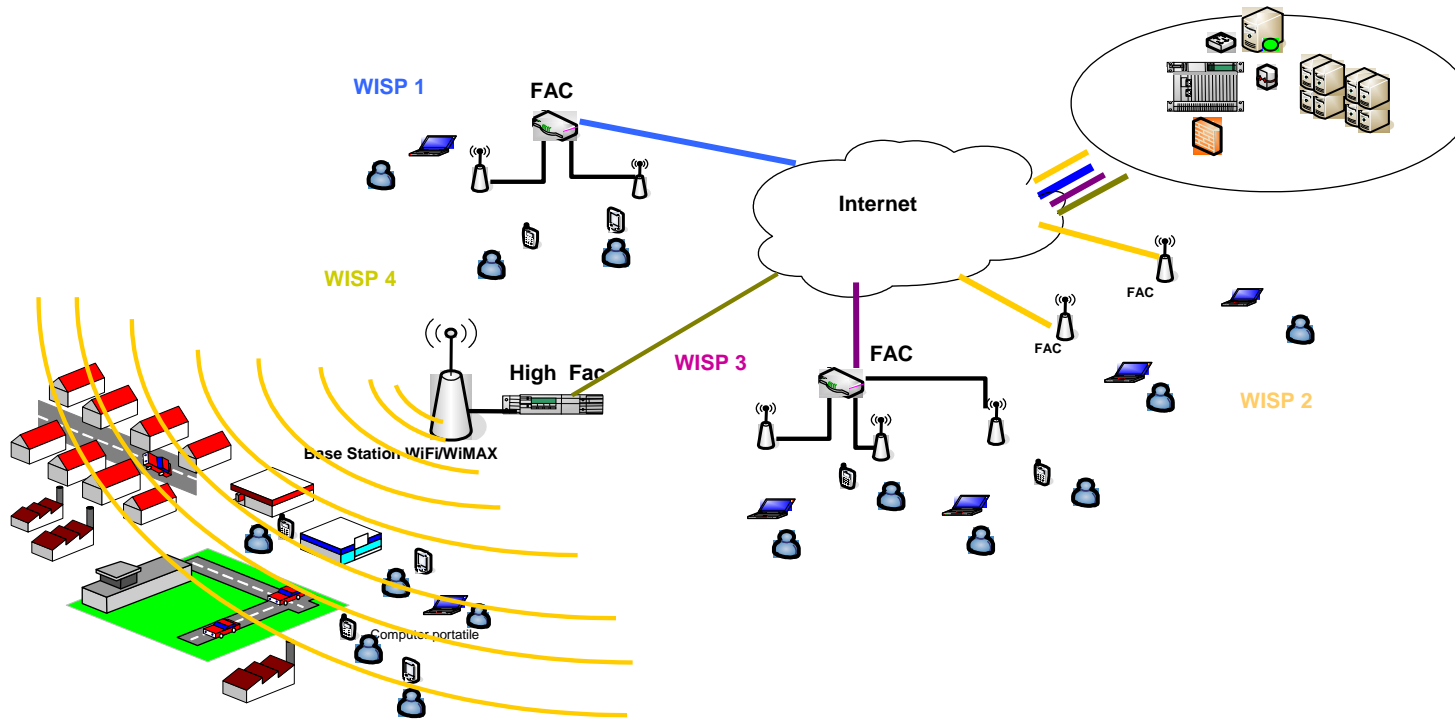
- Pre-Project ( Technical and Economic)
- Radio Planning
- Deployment
- Test Driver
- Marketing Maps



Source: Witech

## WROP: Wireless Radius Operator Platform

# Network Operator Center Generation for Wireless Broadband Public Access





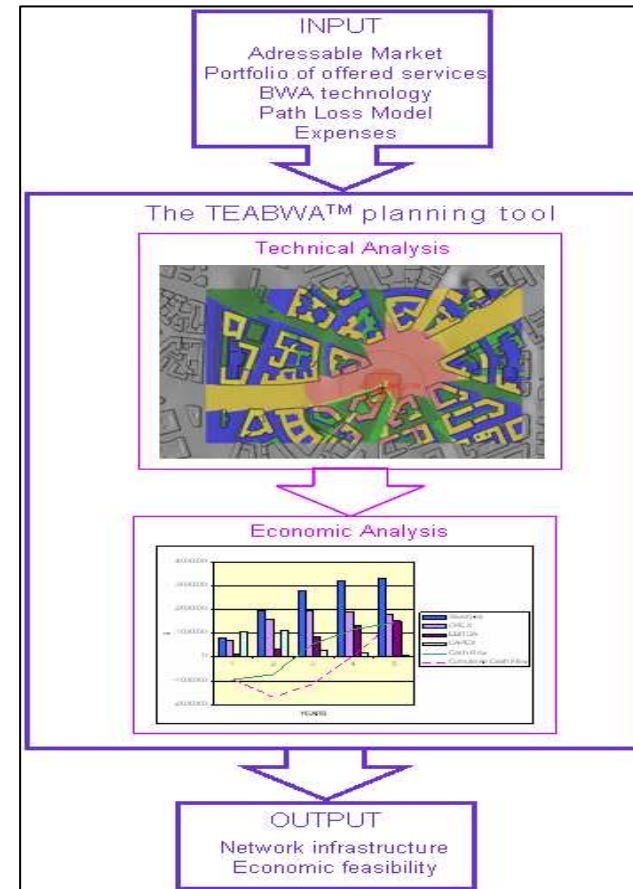
## Technical and Economic Analysis

### Activities:

- Business Plan
- International Report
- TEABWA™ Software Tool

### Partner:

- Senza Fili Consulting
- Vector
- Wireless



## Value Added Distribution

### BWA Outdoor:

- Repeatit



- Skypilot



### BWA Indoor

- Xirrus

